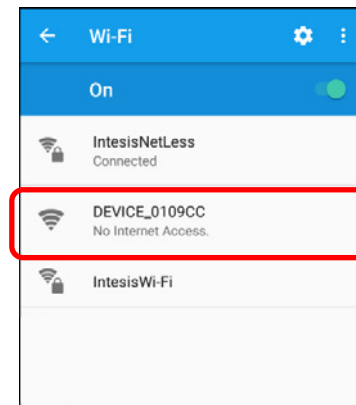


DOWNLOAD AND CONNECT



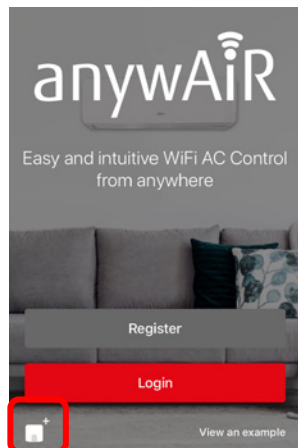
STEP 1
Download the application from Google play or App Store. Direct access to download links can be found at myanywair.com



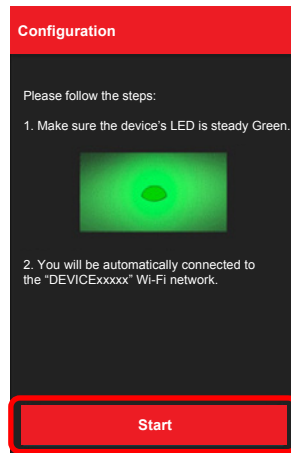
STEP 2
Visit the wireless settings section of your wireless device (smartphone, tablet or laptop) and connect to the network generated by your device (DEVICE_xxxxxx).

Apple, the Apple logo, iPhone and Siri are trademarks of Apple Inc., registered in the U.S. and other countries. App Store is a service mark of Apple Inc. Amazon, Alexa and all related logos are trademarks of Amazon.com, Inc. or its affiliates. ©2019 Google LLC All rights reserved. Google Play™ and Google Assistant™ are trademarks of Google LLC. Other trademarks and tradenames are acknowledged to be the copyright of their respective holders.

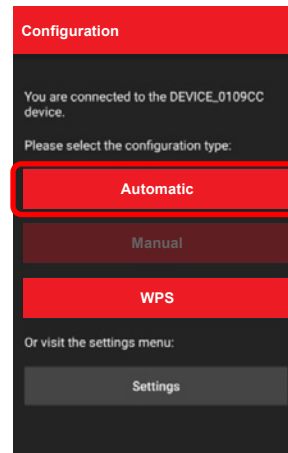
Wi-Fi CONFIGURATION



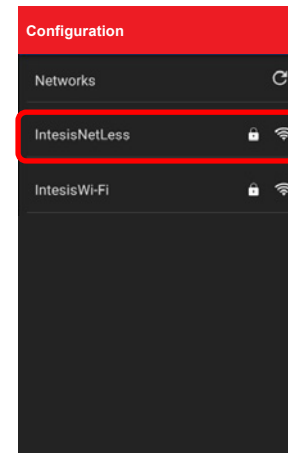
STEP 1
Select the Add Device icon in the bottom left corner of the screen to begin your setup.



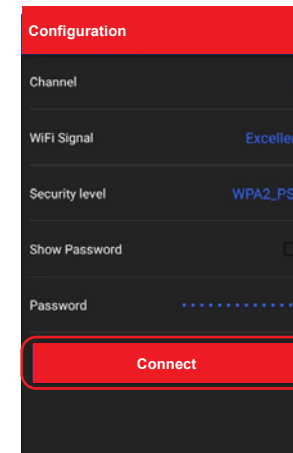
STEP 2
Follow the on screen instructions and then press the "Start" button commence the configuration.



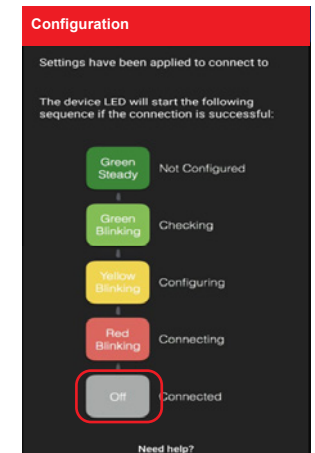
STEP 3
Once the screen displays your connected device, click the "Automatic" configuration button.



STEP 4
Select the desired Wi-Fi network you would like to connect the device to from those displayed on screen.

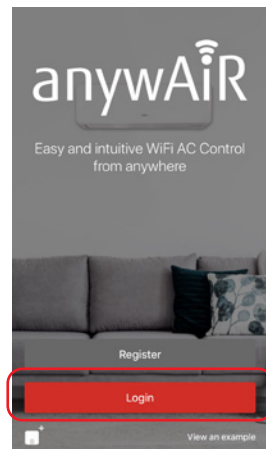


STEP 5
Enter your Wi-Fi password into the password field and then click "Connect".



STEP 6
The LED on the device will change colour according to it's stage in the configuration process. Once the device is successfully configured to the Wi-Fi network, the LED will turn off.

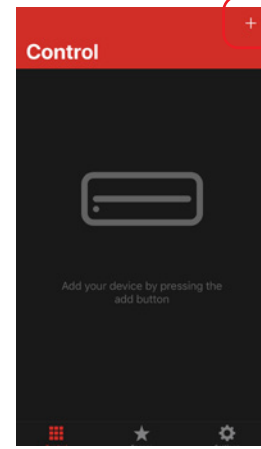
DEVICE REGISTRATION



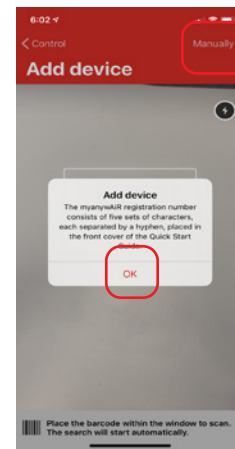
STEP 1
Click the "Login" button.



STEP 2
Enter your username and password then press "Login".



STEP 3
Click the "+" symbol in the top right corner to add a device.



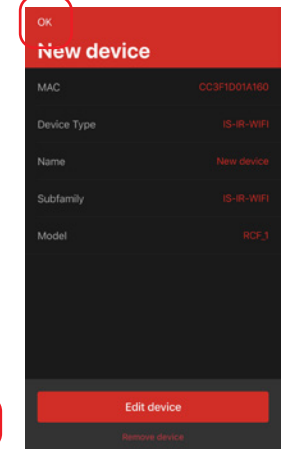
STEP 4
Click "OK" on the pop up.



STEP 5
If scanning the barcode, please ensure to use the barcode on the sticker, not on the unit. Alternatively, you can add the registration number by clicking "Manually".



STEP 6
If entering registration number manually, populate the fields then click "Add device".



STEP 7
Once device is added, click "OK" in the top left corner to complete.

IR CONFIGURATION

STEP 1 Push the button on the rear of the device for 3 seconds.
The LED will turn white.

STEP 2 Pick up the infrared wireless remote control and push the On/Off button pointing to the device.



If configuration is OK, the device LED will blink green.



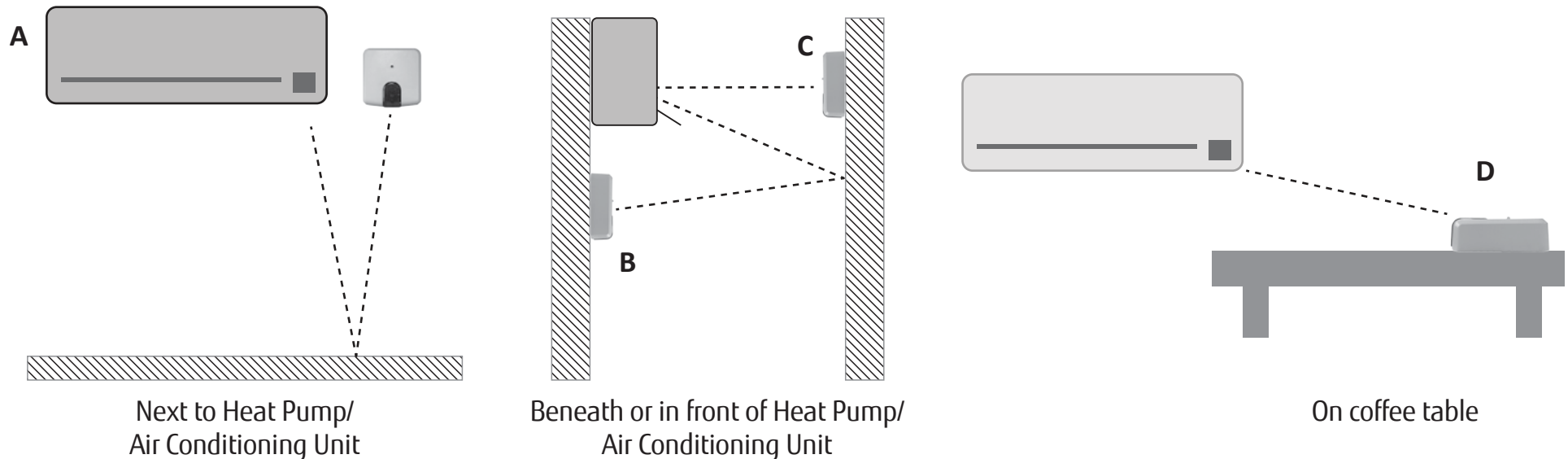
If configuration is not OK, the device LED will blink red.
Repeat the process from step 1 and check our compatibility*
list or visit myanywair.com for more details.



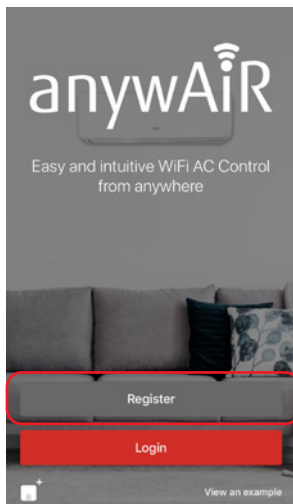
*For compatibility visit myanywair.com.

POSITION DEVICE

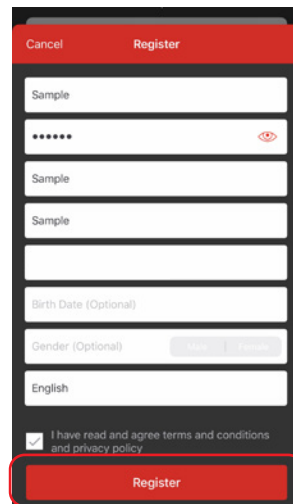
There are several installation and placement options for the anywAiR technology Wi-Fi device. It can be installed side-by-side with the Heat Pump/Air Conditioning unit (case A), under the unit (case B), in front of the unit (case C) or on a desktop position (case D).



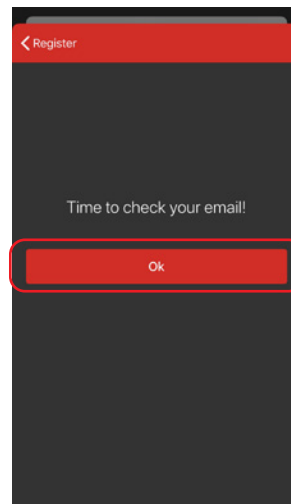
ACCOUNT SETUP



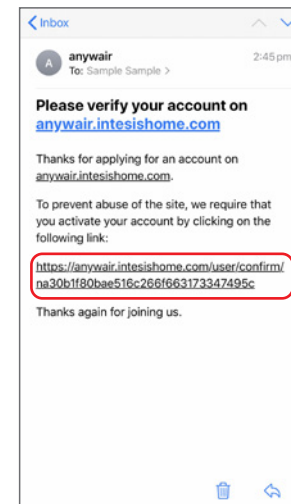
STEP 1
Click the "Register" button.



STEP 2
Complete the form and press "Register"



STEP 3
Click the "OK" button.



STEP 4
Verify your account by clicking the url in the email.



STEP 5
Your account is now successfully activated.